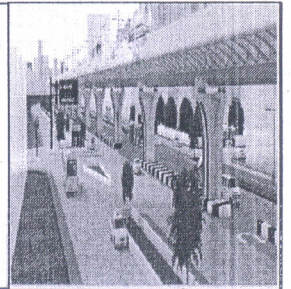




PROJECT MANAGER  
FLYOVER PROJECT CIRCLE F-13  
PUBLIC WORKS DEPARTMENT, GOVT. OF DELHI  
MUKARBA CHOWK, G. T. KARNAL ROAD,  
DELHI - 110033

Ph: 011-27691871, Fax No.: 011-27691971

E-Mail: [pmpwddelhi13@gmail.com](mailto:pmpwddelhi13@gmail.com)



F. No. 23(29-I)/PM/FPC/F-13/PWD/2014/ 2026

Date: - 26-8-14

### Inspection Note

**Sub: - Inspection Note for the work of "Comprehensive Development of Corridor (Outer Ring Road) between Vikaspuri to Meera Bagh."**

Inspected the site of Vikaspuri to Meerabagh along with EE, F-132 and Project Manager of M/s. Simplex on 26.08.2014. First, Started inspection from A-2 side near Meerabagh where wing erection trolleys of span P-78-79 has been erected and for P-79-A2, it is being erected. The drain work on L.H.S. is in progress and the old box drain in this area is being repaired/reconstructed. In the ramp area, this drain is falling on the main carriage way and EE, F-132 informed that there is no other alternative for laying the drain below footpath as one sewage line is running at the location of footpath.

The agency was directed to start the wing erection immediately. The bearings of 3 spans have been installed and EE, F-132 was directed to check and ensure that bearings are installed in proper line and levels.

Then went towards Najafgarh Drain, where reinforcement of one pier leg of portal on R.H.S. adjacent to PWD office was almost complete. Certain deficiencies w.r.t. hook length of stirrups were noticed. EE was directed to get these stirrups removed and replace with the stirrups of proper hook length. Also checked the reinforcement of one pier near CRPF Red light (P-27) and some deficiencies were noticed in the reinforcement of this pier as some of the stirrups were protruding out from the surface. EE was directed to ensure complete rectification before casting. EE was also directed to ensure that reinforcements of the all structure elements are checked at various levels on contractor's side as well as PWD's side so as to ensure that there is no mistake in the reinforcement binding. This has already been directed on number of occasions and should be implemented strictly.

Then went to the casting yard and visited the quality control lab. Witnessed few cube tests of M-60 grade concrete and M-45 and the results were found to be satisfactory.

Then took the round of casting yard along with Project Manager of M/s. Simplex. The curing arrangements of casting yard is still to be improved. It was directed that a dedicated team, headed by some Supervisor/Engineer should be deployed to ensure regular curing of all the precast elements like RE wall panels, spine/wing segments etc. It was also directed to maintain a register of curing so as to ensure regular curing and EE should review this register on regular basis. More number of people may be deployed for curing at different places at a time.

Pin holes in the surface of spine segments were observed and it was suggested to use shutter vibrators to reduce the same. The issue of length of rectangle transverse sheathing ducts was discussed in detail. It has already been directed during earlier inspections that length of rectangle sheathing duct coming out from wing segments/spine segments should be of adequate length so that during stitching, they touch each other and joined through a coupler. This will avoid any problem during threading of strands for lateral pre-stressing. It was noticed that at some location this is not being implement and EE was directed to ensure its strict compliance.

In the site office, discussed the drainage scheme of the corridor. EE was directed to ensure providing of proper drainage scheme at the end and start of the elevated corridor so as to avoid accumulation of water in the valley area. The camber of the road should also be as per the curvature of the road. The various aspects of drainage were discussed in detail and EE was directed to finalize the same and then discuss with the undersigned. The consultant's views may also be obtained on the same. The Fixing arrangements of drainage spouts in elevated corridor was also discussed and finalized.

The Project Manager of M/s. Simplex was also directed to submit a program for casting of 120 segments per month from 4 beds as already pointed out on number of occasions. The issue of procurement of 6 cantilever frames was also discussed. Project Manager of M/s. Simplex informed that 3 cantilever frames are ready and 4<sup>th</sup> one is being fabricated. It was directed that they should immediately plan to procure additional two cantilever frames, as per agreement, so that wing erection runs smoothly otherwise it is going to become a very critical activity and may delay the work at a later date. EE was also directed to issue notice to the agency for procurement of cantilever frames as per agreement.

  
Project Manager  
Flyover Project Circle F-13, PWD

Copy to:-

- (1) Chief Engineer, Flyover Project Zone F-1, PWD, 12<sup>th</sup> Floor, MSO Building, I.P. Estate, New Delhi for kind information please.
- (2) The Executive Engineers, FPD, F-132 for information & necessary action please.

  
Project Manager